



MUELLER®

ATHLETIC TRAINER KITS



ABOUT US

For over 50 years, Mueller Sports Medicine has stayed close to the changing needs of athletes, be they weekend warriors or international superstars.

The mission never changes:
Help athletes stay in the game and
help them perform at their peak.

WE ARE SPORTS MEDICINE®

One Quench Drive, PO Box 99
Prairie du Sac, WI 53578 USA

Phone : 1-800-356-9522
608-643-8530

Fax : 1-800-852-4334
608-643-2568

Email : sportcare@muellersportsmed.com
Website : muellersportsmed.com





MERET™

BUILT FOR PROFESSIONALS

Professionals that depend on rapidly and proficiently deploying medical care during critical moments. MERET™ is built to help you do your job and save lives. The strongest materials and a smart design, and the versatility to modify to your requirements, we listen to your challenges and built MERET™ with intense attention to detail to deliver the quality, reliability, and functionality you expect when you're called into action. MERET™ is built for you, by you.

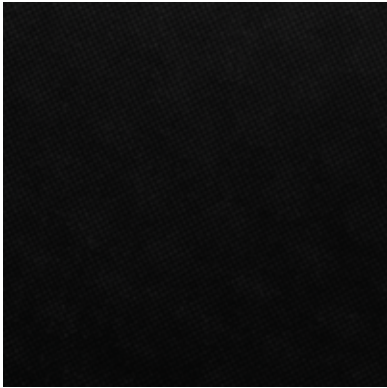


M4L Lifetime Warranty

MERET focuses on designing products that meet the rigorous demands you encounter when saving lives. Our design philosophy centers on the basics of organization, functionality, ergonomics, and rapid response. Our quality requirements far exceed industry standards so our response bags will not fail when you need them most. Our constant dedication to superior design, quality, and craftsmanship, backed by a solid warranty has gained us countless loyal customers and an exemplary reputation for producing reliable, innovative response gear. We proudly stand behind our commitment to excellence and we guarantee our products will function for a lifetime under our MERET for Life (M4L) Warranty Policy. MERET will repair free of charge any defect in our product – whether it is has been in service for 1 year or 20. MERET warrants that all MERET response bags will be free from defects in material and workmanship for the lifetime of the product.



MUELLER® by MERET™



Black

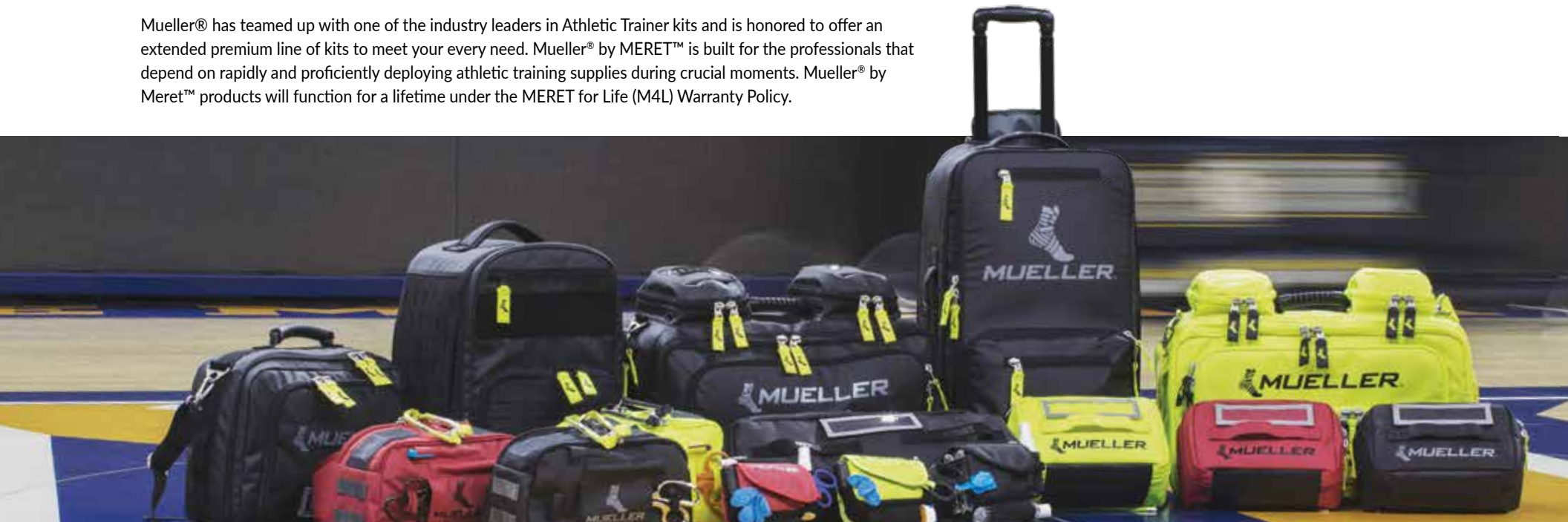


High Viz Yellow



Mueller Red

Mueller® has teamed up with one of the industry leaders in Athletic Trainer kits and is honored to offer an extended premium line of kits to meet your every need. Mueller® by MERET™ is built for the professionals that depend on rapidly and proficiently deploying athletic training supplies during crucial moments. Mueller® by Meret™ products will function for a lifetime under the MERET for Life (M4L) Warranty Policy.





WARNING
Cancer and Reproductive Harm
www.P65Warnings.ca.gov



1680/1200 ICT
Infection Control Tarapaulin



Oversized #10 YKK Super Tough
Zippers W/ Alloy Pulls



Solid Alloy Hardware



2 Needle Taped Seams



SLIDERS™ System For
Unlimited Configurability

	ProPack	Fill Module	X2	First-in	G2	VERSA	Omni	MULE
M4L Lifetime Warranty	•	•	•	•	•	•	•	•
1680/1200 ICT Infection Control Tarapaulin	•	•	•	•	•	•	•	•
Oversized #10 YKK Super Tough Zippers W/ Alloy Pulls	N/A	•	•	•	•	•	•	•
Solid Alloy Hardware	N/A	•	•	•	•	•	•	•
2 Needle Taped Seams		•	•	•	•	•	•	•
SLIDERS™ System For Unlimited Configurability		•		•	•	•	•	•
MOLLE Compatibility	•	•		•		•		
TS2 Ready™ For Attaching Add-on Modules	N/A	N/A	N/A			•	•	•

Available Color Options



MOLLE Compatibility



TS2 Ready™ For Attaching
Add-on Modules



Additional accessories shown are not included

Specs:

- Main compartment - 24" H x 14" W x 9" D / 3024 cu. in. capacity
- Large exterior compartment - 13" H x 11" W x 2.5" D / 357 cu. in. capacity
- Medium exterior zipped ICT covered sleeve - 10.5" H x 11" W
- Small exterior zipped ICT covered sleeve - 9" H x 11" W
- 3.5" Dia. x 1.25" W wheels
- Weight - 10lbs 3oz.
- Product number - 13019 (Black)*

Features:

- Four TS2 Ready™ hideaway zippers for attaching Medi Kit™ Modules
- Attach up to four Medi Kit™ Modules or two X2 Modules to add 1460 cu. in. of detachable capacity
- Hideaway contoured harness system for incredible comfort
- Can be configured to carry a MJD or MD O² cylinder (conversion kit required)
- Three heavy duty box-stitched carry handles
- Customizable internal compartment using SLIDERS™ System
- Main compartments open completely with OneView™ technology
- Telescoping hide-away handle
- Waterproof 1680/1200 ICT (Infection Control Tarpaulin) exterior
- Fully cushioned sidewalls
- Double stitched stress points + taped reinforced seams
- Oversized #10 YKK Super Tough™ exterior zippers with alloy slides
- Meret M4L Lifetime Warranty

M.U.L.E.

XL ROLLING/SHOULDER/BACKPACK

The Medi Kit™ M.U.L.E. (Multi Use Large Equipment) is everything you ever imagined in an athletic training kit. The M.U.L.E. is the total system for athletic trainers looking for packing solutions with hassle-free access to their tools. The M.U.L.E. is a field tested kit on wheels, a harness style backpack, and can be carried like a briefcase; a kit for the professional who wants it all.



Black



**13003 design style until fall 2019*



OMNI

LARGE SHOULDER/BACKPACK

A kit that has it all, customization, performance, and organization. You can configure, reconfigure, and organize the Medi Kit™ OMNI any way you would like. Attach additional modules on the sides depending on your needs.



Black



High Viz Yellow



Specs:

- Main compartment - 21" H x 13" W x 9" D / 2457 cu. in. capacity
- Medium exterior compartment - 16" H x 7" W x 2.75" D / 308 cu. in. capacity
- Two 10" H x 9" W foldout zippered mesh compartments / 180 sq. in. flat capacity
- Two 8" H x 5.5" W x 4.75" D zippered compartments / 209 cu. in. capacity each
- Weight - 7lbs 7oz
- Product numbers - 13013 (Black)*, 13014 (High Viz Yellow)

Features:

- Two TS2 Ready™ hideaway zippers for attaching Medi Kit™ Modules
- Attach two Medi Kit™ Modules to add 730 cu. in. of detachable capacity
- Hideaway contoured harness system
- External O² access; can be configured to carry a size D, MJD or MD O² cylinder
- Accepts All-In-One VIPR™ Oxygen systems
- Customizable internal compartment using SLIDERS™ System
- Main compartments open completely with OneView™ technology
- Compartmental air-dry capability
- Waterproof 1680/1200 ICT (Infection Control Tarpaulin) exterior
- Fully cushioned sidewalls
- Taped reinforced double stitched seams
- Oversized #10 YKK Super Tough™ exterior zippers with alloy slides
- Detachable reflective ID sleeve
- Meret M4L Lifetime Warranty

Additional accessories shown are not included



**13001 design style until spring 2020*



G2

MESSENGER BAG

Medi Kit™ G2 A.T. Briefcase offers a compact style design. It is customizable and provides a very organized solution to rapidly access your equipment and cover your indoor/court sports.

Specs:

- Main compartment - 12" H x 15" W x 6" D / 825 cu. in. capacity
- Side compartment - 9.5" H x 14.5" W 1.8" D / 248 cu. in. capacity
- Weight - 4lbs 3oz
- Product number - 13012 (Black)

Features:

- Front compartment organizes office supplies and smaller gear
- Main compartments open completely with OneView™ technology
- Inside cover has four 1" x 6" loop strips for accessory attachment
- Padded shoulder strap with alloy hardware
- Compartmental air-dry capability
- Waterproof 1680/1200 ICT (Infection Control Tarpaulin) exterior
- Fully cushioned sidewalls
- Taped reinforced double stitched seams
- Oversized #10 YKK Super Tough™ exterior zippers with alloy slides
- Detachable reflective ID sleeve
- Meret M4L Lifetime Warranty



Black



Additional accessories shown are not included





V.E.R.S.A.

BACKPACK

The Medi Kit™ V.E.R.S.A. (Versatile Emergency Response System Assist) is heavy on the versatility. That means unlimited configurability for every situation an athletic trainer might face. The impressive laser cut MOLLE system on the front and sides allows for the most versatility.

Specs:

- Main compartment - 17" H x 13" W x 8.5" D / 1878.5 cu. in. capacity
- Front panel compartment - 10.5" W x 9.5" H x 2" D / 200 cu. in. capacity
- 10" W x 15" H padded zipped sleeve compartment on rear panel
- 9" W x 15" H zipped sleeve compartment on front panel
- Weight - 7lbs
- Product number - 13018 (Black)

Features:

- Laser cut MOLLE panels on three sides
- Two TS2 Ready™ hideaway zippers for attaching Medi Kit™ Modules
- Attach two Medi Kit™ Modules to add 730 cu. in. of detachable capacity
- Attach three Medi Kit™ Modules to add 1095 cu. in. of detachable capacity
- Padded, vented backpack system with a comfortable contoured harness
- Adjustable sternum and waist belt for weight distribution
- Can be configured to carry a M9 oxygen tank
- Front compartment organizes office supplies and smaller gear
- Main compartments open completely with OneView™ technology
- Waterproof 1680/1200 ICT (Infection Control Tarpaulin) exterior
- Fully cushioned sidewalls
- Taped reinforced double stitched seams
- Oversized #10 YKK Super Tough™ exterior zippers with alloy slides
- Meret M4L Lifetime Warranty



Black

Additional accessories shown are not included





FIRST IN

WAIST/SLING

Waistpack/shoulder sling design of the Medi Kit™ First In is a hands-free solution for athletic trainers. Arrive on-scene with your basic supplies to assess and treat athletes quickly and effectively.



Specs:

- Main compartment - 13" H x 5.5" W x 7.5" D / 536.25 cu. in. capacity
- Weight 1lb 12oz.
- Product numbers - 13015 (Black), 13016 (High Viz Yellow), 13017 (Red)

Features:

- Engineered hybrid design functions as a waist pack and shoulder sling bag
- Dual EZ-Grab rapid access pull bars
- Four MOLLE attachment points
- Side panel has loop material for accessory attachment
- Two tape-roll flip-outs™
- One TS2 Ready™ hideaway zippers for attaching a Medi Kit™ Module
- Customizable internal compartment using SLIDERS™ System
- Secured scissors pocket accepts most known types and sizes
- Hideaway, adjustable padded waist strap fits up to 54" waist
- Padded 3D spacer padding over lumbar area for comfort and breathability
- Waterproof 1680/1200 ICT (Infection Control Tarpaulin) exterior
- Fully cushioned sidewalls
- Taped reinforced double stitched seams
- Oversized #10 YKK EZ-Pull™ fast-access pull bars with alloy slides
- Meret M4L Lifetime Warranty



Black



High Viz Yellow



Mueller Red

Additional accessories shown are not included







X2

LONG MODULE

Medi Kit™ X2 Module allows you to carry longer items as needed. This is the perfect sidekick for the Medi Kit™ MULE allowing you to expand the versatility and capacity of your kit.

Specs:

- 22" H x 7" W x 4.75" D / 731.5 cu. in. capacity
- Weight - 1 lb 3 oz.
- Product number - 13011 (Black)

Features:

- Main compartments open completely with OneView™ technology
- Three interior elastic mesh pockets - 1 long and two small
- Waterproof 1680/1200 ICT (Infection Control Tarpaulin) exterior
- Fully cushioned sidewalls
- Taped reinforced double stitched seams
- Detachable reflective ID sleeve
- Shoulder strap sold separately
- Oversized #10 YKK Super Tough™ zipper with solid alloy slides
- Meret M4L Lifetime Warranty



Black

Additional accessories shown are not included





TS2 Ready™

FILL PACK

MODULE

The Medi Kit™ Fill Pack Module can be attached to the outside of the larger kits containing the TS2 Ready™ hideaway zippers or most kits equipped with the MOLLE loop system. Swapping out modules makes it easier to customize your kits.

Specs:

- 11" H x 7" W x 4.75" D / 365.75 cu. in. capacity
- Weight - 10 oz.
- Product numbers - 13008 (Black), 13009 (High Viz Yellow), 13010 (Red)

Features:

- Attaches to kits with TS2 Ready™ hideaway zippers
- Hook and loop straps on back for MOLLE compatibility
- Three interior elastic mesh pockets
- Box-stitched EZ-Grab handle
- Main compartment open completely with OneView™ technology
- Waterproof 1680/1200 ICT (Infection Control Tarpaulin) exterior
- Fully lined with cushioned sidewalls
- Double stitched stress points + taped reinforced seams
- Oversized #10 YKK Super Tough™ zipper with solid alloy slides
- Detachable reflective ID sleeve
- Meret M4L Lifetime Warranty



Black



High Viz Yellow



Mueller Red



PPE PROPACK

ESSENTIALS KIT

The Medi Kit™ PPE Sport ProPack is a very compact waist kit full of potential. This hands free kit is engineered for fast access to items you use most.

Specs:

- 6" H x 4.5" W x 2.5" D / 67.5 cu. in. capacity
- Product numbers - 13005 (Black), 13006 (High Viz Yellow), 13007 (Red)

Features:

- Three heavy elastic feed-thru loop to secure supplies - top, side and bottom
- One heavy-duty exterior vertical sleeve suited for popular multi-tools
- Underside of the top flap has a holster to secure bandage scissors
- Exam glove pocket with feed-thru, for quick access
- Worn by clipping on waist band or sliding on your belt
- Attaches to all kits with MOLLE loops
- Waterproof 1680/1200 ICT (Infection Control Tarpaulin) exterior
- Double stitched stress points + taped reinforced seams
- Meret M4L Lifetime Warranty



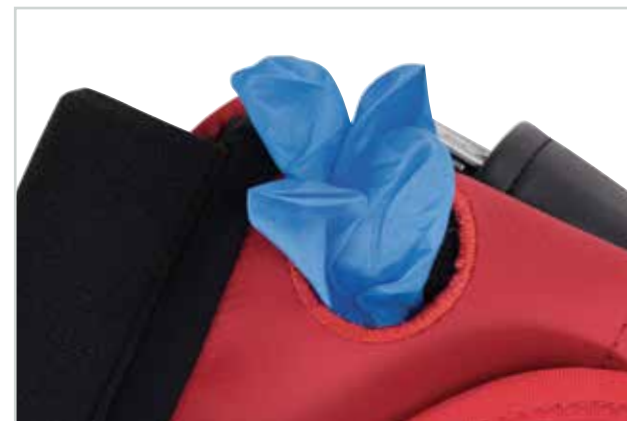
Black



High Viz Yellow



Mueller Red





PRO SPORT

BACKPACK

The Mueller Medi Kit™ Pro Sport Backpack is a perfect equipment management system for the Athletic Trainer who wants a mobile organized solution for their supplies. Easy to throw over your shoulder and go.

Specs:

- Main compartment - 18" H x 13" W x 9" D / 2106 cu. in. capacity
- Front panel compartment - 9" W x 10.5" H x 1.5" D / 141 cu. in. capacity
- Weight - 4lbs 6oz
- Product number - 13004 (Black)

Features:

- Two TS2 Ready™ hideaway zippers for attaching Medi Kit Modules
- MOLLE loops on front pane accepts a third Medi Kit Module
- Padded, vented backpack system with contoured harness increases comfort
- Adjustable sternum and waist belt for weight distribution
- Comfort grip carry handel on top of bag
- Front compartment organizes supplies and smaller gear
- Side mesh pockets for additioanl quick access storage
- Main compartments open completely with OneView™ technology
- Waterproof 1680/1200 ICT (Infection Control Tarpaulin) exterior
- Fully cushioned sidewalls
- Taped reinforced double stitched seams
- Oversized #10 YKK Super Tough™ exterior zippers with alloy slides
- Meret M4L Lifetime Warranty



Black



Additional accessories shown are not included



MUELLER MERET® ACCESSORIES

Unlimited configurability at your fingertips. Customize your kit the way you want with these high quality accessories.

MERET™ Deep Stuff Pocket

- 8" H x 8" W x 2" D
- Nylon/Plastic
- Hook and loop installation
- Product number - 13900



MERET™ Adjustable Slider Divider

- 5" H x 3" W to 5.5" W (adjustable)
- Nylon
- Hook and loop installation
- Product number - 13100



MUELLER® HERO®

Swap, shift, configure, and reconfigure your HERO kits just the way you need them. The secret weapons are the interchangeable pockets and divider accessories.

Each kit is made of rugged lightweight nylon that holds up to the life of an Athletic Trainer. Full-open design means you can unzip completely for fast and easy access. You'll appreciate the customization, made-to-last construction, and the reflective accents for increased visibility in low-light environments. Your possibilities are endless with the options of the Mueller® Hero® Athletic Trainer Kits!

HERO® WARRANTY

The premium zippers, handles and pockets are built to last; and we back these kits with a one year warranty.





Water-resistant
1650-denier nylon



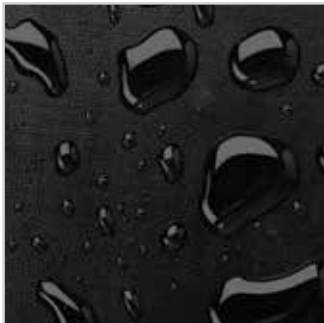
Premium zippers



Reflective trim



Unlimited configuration



Rain fly

	Waist Pack	Sling Bag	Utility	Protégé	Response	Unsung	Perfect	Epic	Titan
Water-resistant	•	•	•	•	•	•	•	•	•
Premium zippers	•	•	•	•	•	•	•	•	•
Reflective trim		•	•	•	•	•	•	•	•
Unlimited configuration			•	•	•	•	•	•	•
Rain fly							•	•	•
18" roller stick capacity								•	•
4" wheels & telescoping handle								•	•



18" roller stick capacity



4" wheels &
telescoping handle

MUELLER HERO® KITS



TITAN

XXL ROLLING

The Mueller® HERO® Titan is our XXL training room on wheels. With the XXL size, you have the power to customize: swap, shift, configure and reconfigure your Titan just the way you need it.

Additional accessories shown are not included



Specs:

- Main compartment - 30"L x 16"W x 12"D / 5760 cu. in. capacity
- Two side compartments - 20"L x 9.25"H x 2"D / 462 cu. in. capacity
- End compartments - 11"H x 6"W x 2"D / 132 cu. in. capacity
- Product number - 19116 (empty)

Features:

- Interior sides have two 2" hook & loop strips for accessory attachment
- Quality YKK zippers with solid metal glides
- Heavy-duty Shoulder Strap System
- Rigid molded sidewall for strength and structure
- Includes a travel/rain fly
- Sturdy telescoping handle
- 4" rolling wheels with bearings
- Robust polymer corner protectors
- Hero® Warranty

Included Accessories:

- L2 Divider 10" x 10" (2 ea)
- L2 Divider 15" x 10" (2 ea)
- M2 10" x 10" mesh pocket (1 ea)
- M2 10" x 10" clear pocket (2 ea)
- Tie-down straps (4 ea)
- Rain fly (1 ea)





EPIC

XL ROLLING

The Mueller® HERO® Epic is our XL training room on wheels. With the XL size, you have the power to customize: swap, shift, configure and reconfigure your Epic just the way you need it.

Specs:

- Main compartment - 24" H x 16" W x 12" D / 4608 cu. in. capacity
- Two side compartments - 20" H x 9.25" W x 2" D / 370 cu. in. capacity each compartment
- End compartments - 11" H x 6" W x 2" D / 132 cu. in. capacity
- Product number - 19115 (empty)

Features:

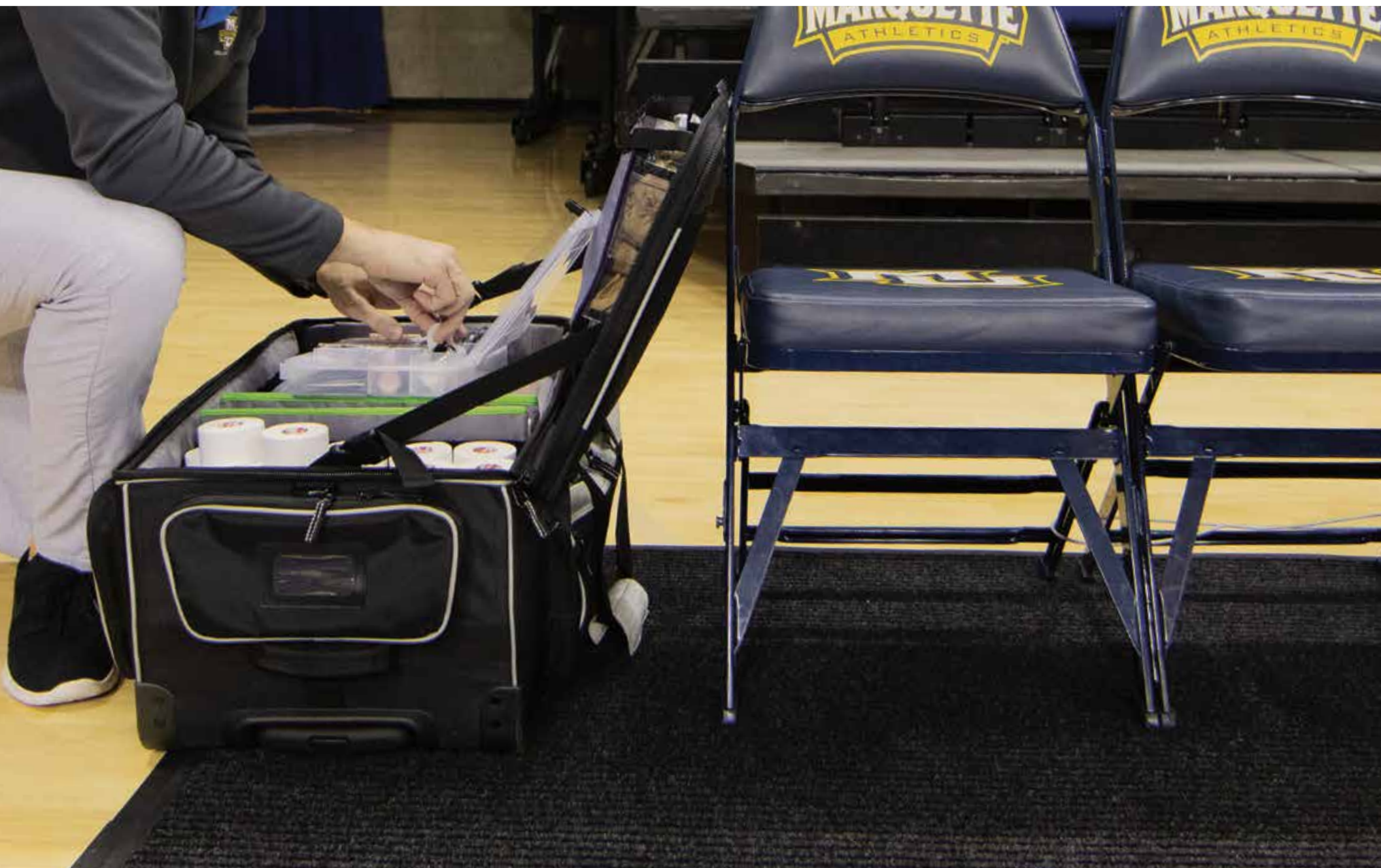
- Interior sides have two 2" hook & loop strips for accessory attachment
- Quality YKK zippers with solid metal glides
- Heavy-duty Shoulder Strap System
- Rigid molded sidewall for strength and structure
- Includes a travel/rain fly
- Sturdy telescoping handle
- 4" rolling wheels with bearings
- Robust polymer corner protectors
- Hero® Warranty

Included Accessories:

- L2 Divider 10" x 10" (2 ea)
- L2 Divider 15" x 10" (2 ea)
- M2 10" x 10" mesh pocket (1 ea)
- M2 10" x 10" clear pocket (2 ea)
- Tie-down straps (4 ea)
- Rain fly (1 ea)

Additional accessories shown are not included







PERFECT

LARGE SHOULDER

The Mueller® HERO® Perfect is a large-capacity shoulder-carry kit. This kit includes a vast array of accessories for configuring your Perfect just the way you need it.

Specs:

- Main compartment - 21" H x 11" W x 12" D / 2772 cu. in. capacity
- Two side compartments - 8" H x 9.25" W x 2" D / 148 cu. in. capacity each compartment
- Front compartment - 19" H x 9.25" W x 2" D / 351 cu. in. capacity each compartment
- Product number - 19114 (empty)

Features:

- Interior sides have two 2" hook & loop strips for accessory attachment
- Quality YKK zippers with solid metal glides
- Heavy-duty Shoulder Strap System
- Tarpaulin bottom for durability and moisture control
- Rigid molded sidewall for strength and structure
- Includes a travel/rain fly
- Hero® Warranty

Included Accessories:

- L2 Divider 10" x 10" (2 ea)
- L2 Divider 10" x 5" (2 ea)
- M2 10" x 10" mesh pocket (2 ea)
- Tie-down straps (4 ea)
- Rain fly (1 ea)

Additional accessories shown are not included





RESPONSE

MEDIUM SHOULDER

The Mueller® HERO® Response is a medium-capacity shoulder-carry kit. The Response is large enough to hold essential gear and meets airline carry-on requirements making it the ideal choice for traveling.



Specs:

- Main compartment - 18" H x 11" W x 12" D / 2376 cu. in. capacity
- Two side compartments - 8" H x 9.25" W x 2" D / 148 cu. in. capacity
- Front compartment - 13" H x 9.25" W x 2" D / 240 cu. in. capacity
- Product numbers - 19119 (empty), 200119 (Complete kit with Mueller refill products)

Features:

- Quality YKK zippers with solid metal glides
- Interior sides have two 2" hook & loop strips for accessory attachment
- Heavy-duty Shoulder Strap System
- Rigid molded sidewall for strength and structure
- Tarpaulin bottom for durability and moisture control
- Meets airline carry-on requirements
- Hero® Warranty

Included Accessories:

- M2 10" x 10" clear pocket (1 ea)

Additional accessories shown are not included



PROTÉGÉ

SMALL SHOULDER

The Mueller® HERO® Protégé is your rugged and sturdy athletic training kit. It's compact yet large enough to be your go-to medical bag for most situations.

Specs:

- Main compartment - 11.5" H x 12" W x 9.5" D / cu. in. capacity
- Two side compartments - 7" H x 9" W x 2" D / 126 cu. in. capacity
- Front compartment - 8" H x 9" W x 2" D / 144 cu. in. capacity
- Product numbers - 19118 (empty) , 200118 (Complete kit with Mueller refill products)

Features:

- Customizable kit with interchangeable accessories
- Reflective piping for increased visibility in low light
- Constructed of lightweight nylon and durable crack resistant TPU (down to -40°F)
- Full-open design lets you unzip bags completely for easy packing of gear
- Quality YKK zippers with solid metal glides
- Hero® Warranty

Included Accessories:

- M2 10" x 10" clear pocket (1 ea)

Additional accessories shown are not included



UNSUNG

BACKPACK

The Mueller® HERO® Unsung Backpack lets you load up, throw it on your back and go! The kit is relatively compact, well-balanced and very comfortable. Three part spacer mesh padding system minimizes direct contact on the spine allowing air flow, even in hot weather.

Specs:

- Main compartment - 16" H x 10.5" W x 6" D / 1008 cu. in. capacity
- Front compartment - 11.5" L x 8" H x 1.75" D / 138 cu. in. capacity each compartment
- Side compartments - 10" H x 4.5" W x 2.25" D / 101 cu. in. capacity
- External zipped mesh panel - 10" H x 7" W
- Product number - 19113 (empty)

Features:

- Quality YKK zippers with solid metal glides
- Padded shoulder straps with breathable spacer mesh
- Shoulder straps feature full-length MOLLE webbing and two D-rings
- Structural foam in top, sides, and bottom
- Tarpaulin bottom for durability and moisture control
- Box-stitched molded handle
- Reflective trim
- Hero® Warranty

Included Accessories:

- L1 Divider 5" x 5" (2 ea)
- L1 Divider 10" x 5" (2 ea)
- M2 10" x 10" mesh pocket (1 ea)
- M1 Clear Folded Pocket 10" H x 5" W (1 ea)



Additional accessories shown are not included



SCOUT

MESSENGER BAG

Make the Mueller® HERO® Scout your every day athletic trainer kit. It's lightweight, easy to pack/unpack, capacity to carry your vital paperwork and tablet/laptop. Rugged lightweight nylon exterior can holdup to the rough life of an athletic trainers.

Specs:

- Main compartment - 15" H x 10" W x 4" D / 600 cu. in. capacity
- Product number - 19922 (empty)

Features:

- Cushioned sidewall main compartment for vital paperwork and tablet/laptop storage
- Reflective piping for increased visibility in low light
- Constructed of lightweight nylon and durable crack resistant TPU (down to -40°F)
- Messenger over the shoulder style bag
- Quality YKK zippers with solid metal glides
- Hero® Warranty



UTILITY

WAIST/SLING

The Mueller® HERO® Utility Waist Pack can be configured to put what you need most right at your fingertips.

Specs:

- Main compartment - 11" H x 6" W x 7" D / 462 cu. in. capacity
- Front compartment - 8" H x 1.5" W x 4" D / 80 cu. in. capacity
- Side compartments - 3.25" H x 1.25" W x 4.75" D / 19.29 cu. in. capacity each compartment
- Product number - 19111 (empty)

Features:

- Quality YKK zippers with solid metal glides
- Cushioned back and side panels with breathable spacer mesh
- Lid and all four walls lined with 2" hook & loop strips for accessory attachment
- Re-enforced taped seams
- Padded side walls for sturdy comfort
- Tarpaulin bottom for durability and moisture control
- Two covered tape holsters can hold 3" tape rolls
- Six reflective tape holders
- 1.5" quick-release waist belt
- Hero® Warranty

Included Accessories:

- M1 Clear Folded Pocket 10" H x 5" W (1 ea)

Additional accessories shown are not included





MUELLER HERO® ACCESSORIES

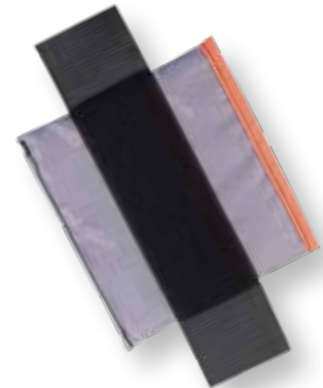
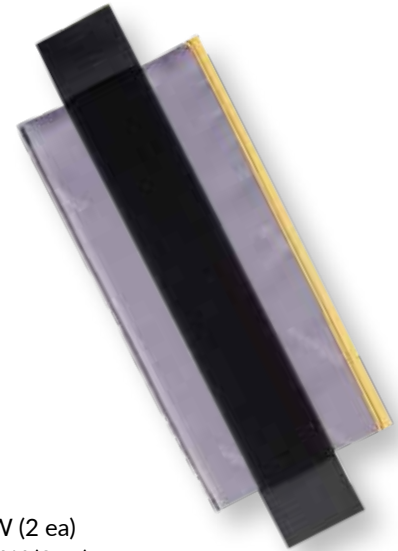
These accessories give you the ability to personalize your kit. Swap, shift, configure and reconfigure.

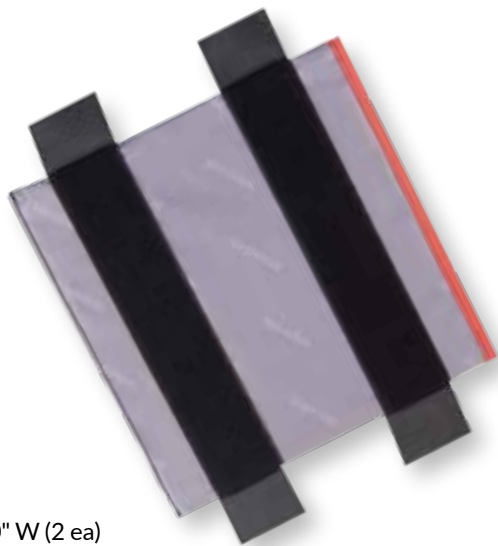
L1-5 Divider Kit

- L1 Divider 5" H x 5" W (2 ea)
- L1 Divider 5" H x 10" W (2 ea)
- Nylon
- Hook and loop installation
- Product number - 19551

Fits

- Utility
- Unsung



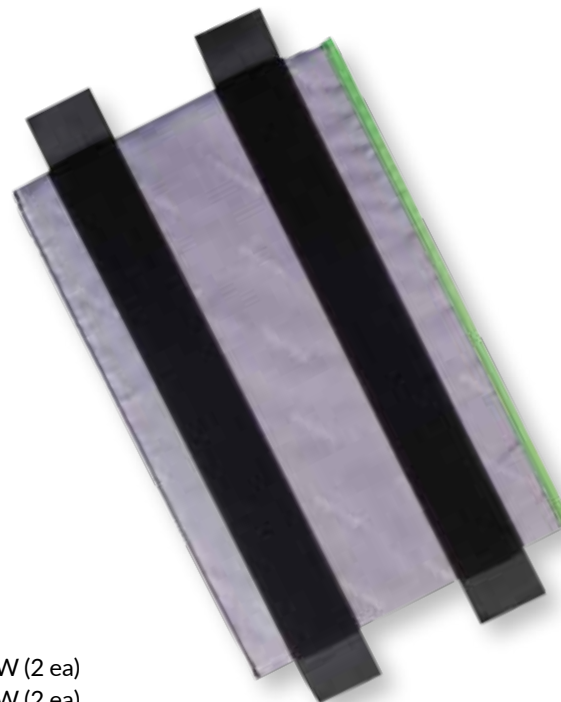
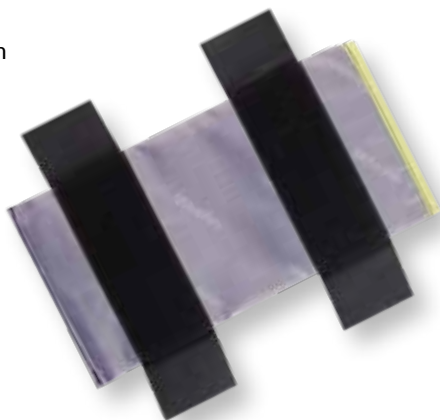


L2-10 Divider Kit

- L2 Divider 10" H x 10" W (2 ea)
- L2 Divider 10" H x 5" W (2 ea)
- Nylon
- Hook and loop installation
- Product number - 19552

Fits

- Titan
- Epic
- Perfect
- Response
- Protégé

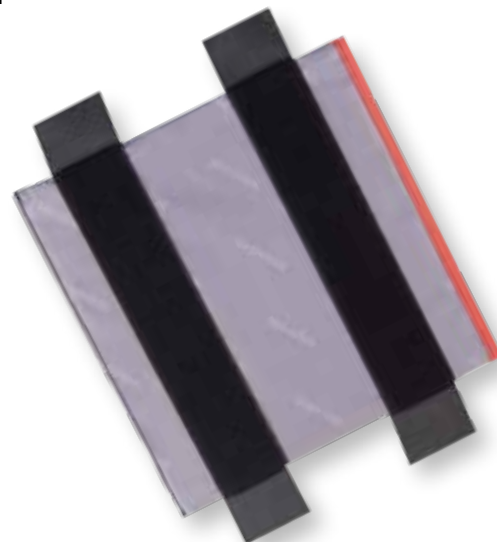


L2-10 Divider Kit

- L2 Divider 10" H x 10" W (2 ea)
- L2 Divider 10" H x 15" W (2 ea)
- Nylon
- Hook and loop installation
- Product number - 19553

Fits

- Titan
- Epic
- Perfect
- Response
- Protégé



M1-5 Zipper Pocket Kit

- M1 Zipper clear Pocket 5" H x 10" W (2 ea)
- Nylon/Plastic
- Zipper closure
- Hook and loop installation
- Product number - 19443



M2-10 Mesh Pocket Kit

- M2 Clear Pocket 10" H x 10" W (2 ea)
- Nylon/Mesh
- Zipper closure
- Hook and loop installation
- Product number - 19772



M1-5 Clear Folded Pocket Kit

- M1 Clear Folded Pocket 10" H x 5" W (2 ea)
- Nylon/Plastic
- Zipper closure
- Hook and loop installation
- Product number - 19330



M2-10 Clear Pocket Kit

- M2 Mesh Pocket 10" H x 10" W (2 ea)
- Nylon/Plastic
- Zipper closure
- Hook and loop installation
- Product number - 19773





M2-10 Folded Clear Bandage Kit

- M2-10 Folded Clear Bandage Pocket 15" H x 10" W (2 ea)
- Nylon/Plastic
- Zipper closure
- Hook and loop installation
- Product number - 19220

Tie Down Strap Kit

- Tie Down Strap (4 ea)
- Nylon/elastic
- Hook and loop installation
- Product number - 19010



M2-10 Cartridge Kit

- M2 Cartridge 10" H x 10" W (2 ea)
- Nylon/Plastic
- Zipper closure
- Hook and loop installation
- Product number - 19990

M1-10 Cartridge Kit

- M1 Cartridge 10" H x 5" W (2 ea)
- Nylon/Plastic
- Zipper closure
- Hook and loop installation
- Product number - 19660



MUELLER CLASSIC KITS

These time-tested designs have been the top choices among athletic trainers for decades. Constructed of rugged lightweight nylon, these classic kits hold up to the rigorous life of an athletic trainer.

MUELLER® WARRANTY

The premium zippers, handles and pockets are built to last; and we back these kits with a one year warranty.



Water-resistant
1650-denier nylon



Premium zipper



Reflective trim

	Waist Pack	Sling Bag
Premium zippers	•	•
Water-resistant	•	•
Reflective trim		•



SLING

BAG

Made of rugged lightweight nylon, Mueller® Sling is a must-have for every athletic trainer. You'll appreciate the made-to-last construction and the smart storage design. The Sling features a top-lid for quick access but also unzips completely for packing and/or full access.

Specs:

- Main compartment - 12" H x 14" W x 4" D / 672 cu. in. capacity
- Front compartment - 6" H x 6" W x 1" D / 36 cu. in. capacity
- Product number - 16017 (empty)

Features:

- Quality YKK zippers with solid metal glides
- Breathable padded sling strap
- Easy access tape roll holster
- Single-handed quick release

Additional accessories shown are not included





FANNY PACK

WAIST/SLING

Classic fanny pack that features a multi-compartment design to keep essential supplies organized and readily available. You'll appreciate the made-to-last construction.

Specs:

- Main compartment - 11" H x 2.5" W x 6" D / 165 cu. in. capacity
- Front compartment - 7" H x 4" W x 1.5" D / cu. in. capacity
- Flat compartment - 11" H x 5" W / 55 cu. in. capacity
- Product number - 200728 (empty)

Features:

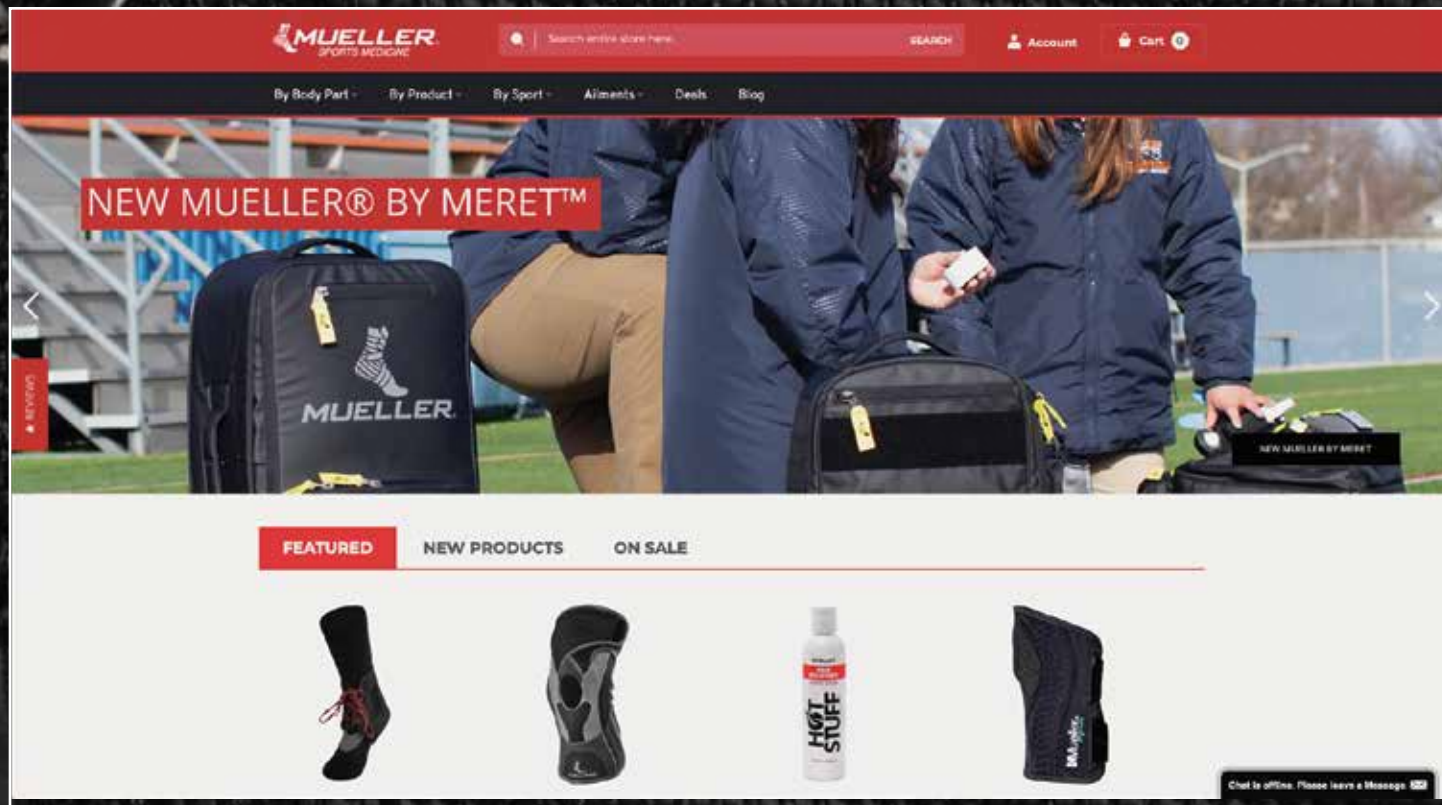
- Quality YKK zippers with solid metal glides
- Reinforced belt strap
- Fits up to a 42" waist
- Single-handed quick release



Additional accessories shown are not included







VISIT US AT
MUELLERSPORTSMED.COM